

Assignment 1 What Is Environmental Stewardship?

In this project, you become a steward for the environment. You inspire others to be responsible for taking care of our planet.

You will create an infographic using Google Sites.

Your publication will make people aware of environmental concerns. It will be a powerful call to action.

Before getting started, learn about being an environmental steward. Afterwards, read the news about current environment issues.



Why Should We Care About the Environment?

Our home is planet Earth. Our safety and wellbeing are affected by where we live. We will be healthier if the air is clear, the water is clean, and the land around us is unpolluted. We must all contribute to take care of our shared home.

Consider the reasons why everyone should accept responsibility for the environment:

- Pollution can make people and animals sick.
- A clean environment is necessary for our health and survival.
- Humans rely on natural resources for food, energy, and manufacturing material.
- Natural resources provide jobs for many people.
- Humans consume resources so fast that often nature cannot replace the supply. This is not sustainable. Nature must replenish itself so humans can continue to use the resources.
- Biodiversity, which is the variety of animals and plants on Earth, depends on the careful maintenance of habitats and ecosystems.
- Future generations need a healthy environment to thrive.

What Is Stewardship?

Stewardship is responsibility for something of importance. An environmental steward helps make Earth's natural environment sustainable for people in the future.

An environmental steward:

- conserves natural resources
- protects the environment from harm
- restores habitats
- promotes the importance of stewardship to others
- helps make the Earth's natural resources sustainable for future generations

Current Events and the Environment

The list of concerns that are impacting our environment is great and changes over time. Many problems are being solved. Other issues need more attention. A few challenges might always need to be tackled.

Use Google News to view current events about the environment.

What is happening globally, nationally, or locally that interests you? Make a list of headlines.



1. Visit **Google News**: <https://news.google.com>



2. In the search box, type **environment** or pick from the list of topics:

- *environment*
- *pollution*
- *sustainability*
- *natural resource*
- *climate change*
- *biodiversity*
- *conservation*
- *forestry*
- *agriculture*
- *mining waste management*
- *renewable energy*
- *energy*
- *fossil fuels*
- *wildlife*

3. Scan the headlines. What are today's environmental concerns in the news?

List **three** headlines that catch your attention. They should be about a topic that is important to you.

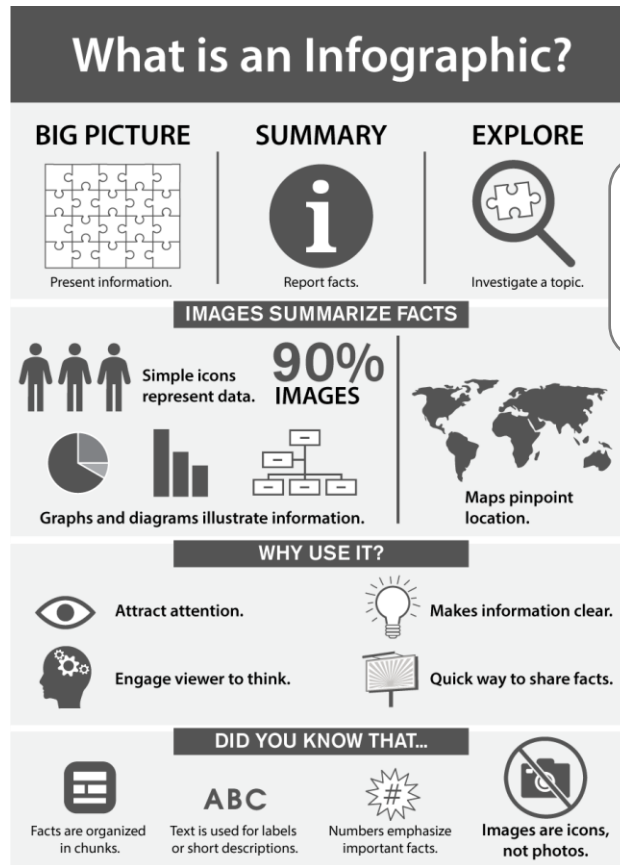


Assignment 2 What Is an Infographic?

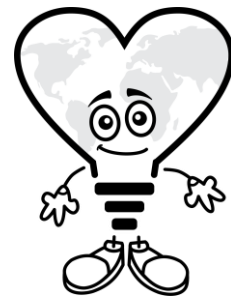
You are going to make an infographic that raises awareness about an environmental issue. Read to learn about this type of publication. Afterwards, view a sample to get ideas.

What Is an Infographic?

An infographic is a big picture that summarizes a topic. It is a one-page publication that presents **information** in a **graphic** way. Simple icons, symbols, maps, and charts combine to explain the data. Text is only used as labels or to briefly describe facts. The viewer explores the content by studying each section of cartoon-like images.



Your infographic will be *interactive*. The viewer will experience the information rather than just read it.



Why Use an Infographic?

An infographic is a simple but powerful way to communicate. There are many reasons to use it:

- catches the interest of the viewer
- outlines many facts in a compact space
- conveys data quickly using images
- informs without lots of written information
- engages the viewer to think about the topic, because they must explore each part
- makes a complex issue easy to understand

Characteristics of an Infographic

▷ Visit <https://sites.google.com/view/aboutacidrain/home>

CONTENT

1. How does human activity cause the problem?



2. What is a harmful effect or risk related to the issue?



3. Watch the rotating slide deck. List an interesting fact



4. Click a map marker. List one place where the problem occurs.



5. Find a solution to the problem. What is it?



DESIGN

6. Text is used for headings and to report brief facts. Which heading catches your attention?

ABC

7. Simple images explain the data. What kind of images were used?



8. Numbers emphasize important facts. What number catches your attention?



9. Color should suit the topic. Why did the creator use the color theme?



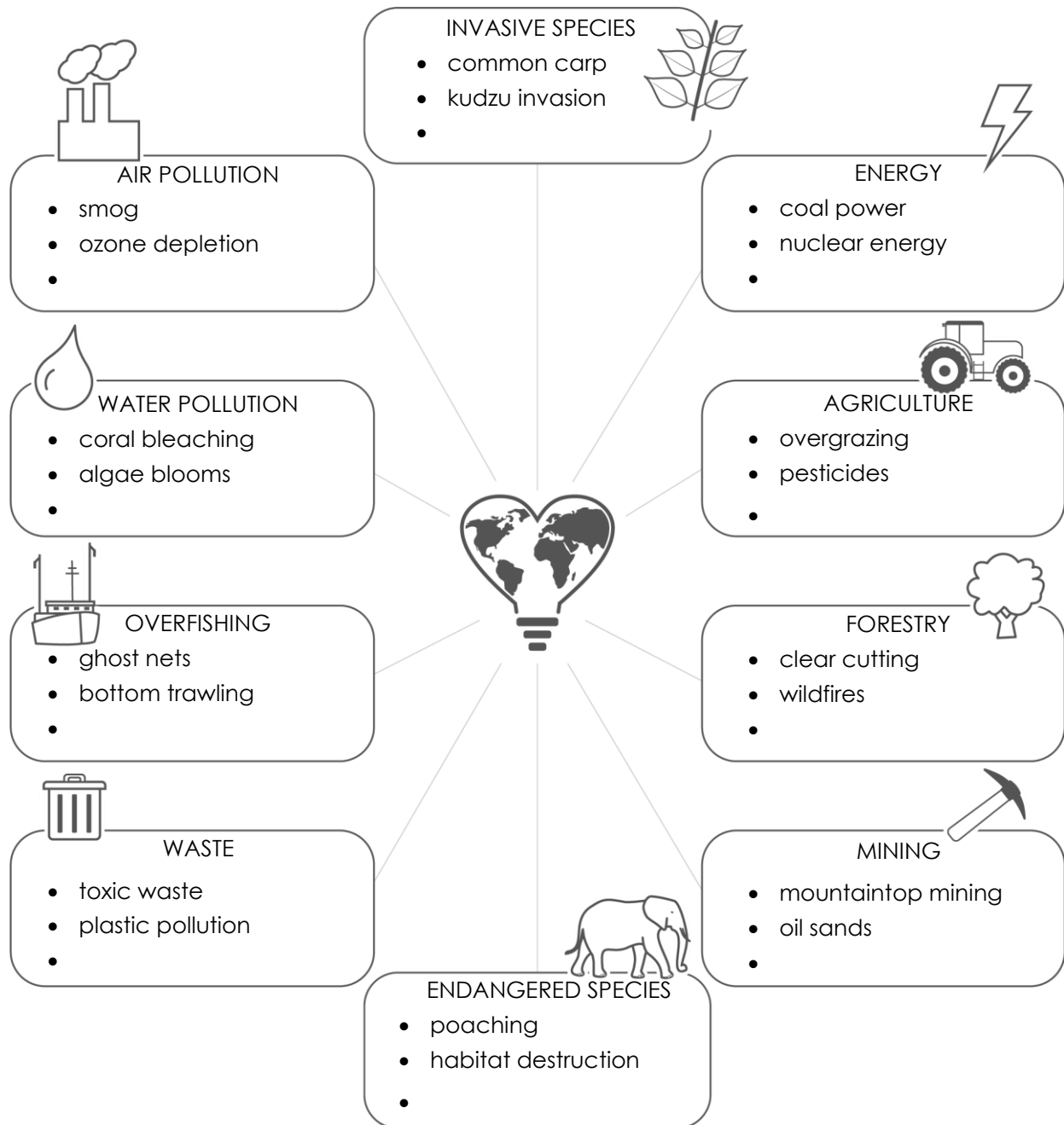
10. Information is chunked into parts. How is the topic divided into sections?



Assignment 3 Pick an Environmental Topic

It is time to become an environmental steward. Brainstorm a topic for your infographic. Pick one of the topics listed or come up with your own idea. Use these tips:

- Choose a local environmental issue in your community.
- Pick a topic based on an issue you are studying in *Science* or *Geography* class.
- Search the Internet to find an interesting topic.
- Narrow a broad topic such as *waste* to focus on a more specific issue such as *plastic water bottles* or *plastic shopping bags*.



What environmental issue will you research? _____

Assignment 4 Research the Issue

In this assignment, you research an environmental issue. Your goal is to educate others about the topic. You will arrange the information into an infographic. This will allow readers to quickly get the facts.




You will use the *Research Outline* template to organize your findings. Follow the instructions to copy and paste the information under the appropriate heading.

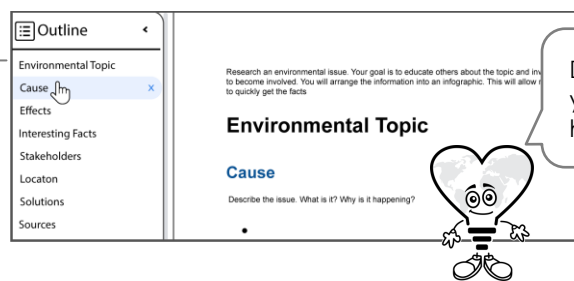
Your research must include:

- ✓ **Cause:** What is it? Why is it happening? What human activity is causing the problem?
- ✓ **Effects:** What are the harmful effects or risks? List at least two.
- ✓ **Interesting Facts:** What information will attract attention and inform readers? List three facts. One of them must contain a value such as a price, amount, or percentage.
- ✓ **Stakeholders:** Who are the people, businesses, and organizations who have a "stake" or interest? List three stakeholders and how they are involved.
- ✓ **Solutions:** How can people help? List at least two solutions. One must identify a reputable organization or group that is involved in solving the problem. The other solution might be an action, lifestyle change, or consumer habit.
- ✓ **Sources:** List the URL of each website you use to research information.

Use the Template in Document Outline View

1. ▷ Open the *Research Outline* template in Google Docs.
 - ▷ Replace **Environmental Topic** with the issue you have selected.
 - ▷ Click *Show document outline* . Or pick it from the View menu.
 - ▷ Click on each of the headings in the outline pane. This will take you to each one.

The heading should be your topic name.



Document outline view lets you quickly move from one heading to another.

Research the Cause

2. ▷ KEEP THE RESEARCH OUTLINE open!
 - ▷ Open a new tab. Type **www.google.com** in the address box. Press ENTER.
 - ▷ Type the **topic name** into the search bar and press ENTER.



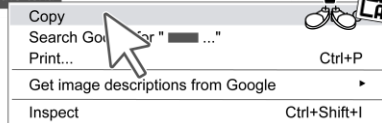
- ▷ View the search results.

Find a Fact and Copy It from the Web Page

3. ▷ Click a link that you think will describe the **cause** of the issue.
 - ▷ Find the information you need.
 - ▷ Select the text you want to copy.
 - ▷ Right click and pick *Copy* from the menu.

What is Topic Name?

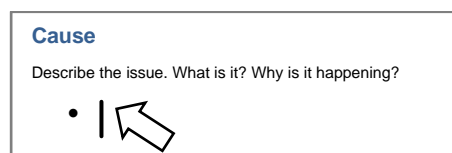
Find a description of the environmental issue. The text should define the topic. Or, it could outline reasons that the problem is happening. Select the text.



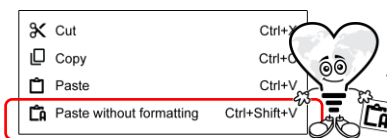
Be selective! Do not copy everything - just the fact you need.

Paste the Fact into the Research Template

4. ▷ Click on the tab with the research outline.
 - ▷ Position the cursor by clicking beside the bullet under the heading **Cause**.



- ▷ Right click and pick *Paste without formatting* from the menu.



Remove the font style that was on the web page.

Tell Where You Found the Fact

5. ▷ Click the website tab.
 - ▷ Select the URL in the address bar and then right click. Pick *Copy* from the menu.



6. ▷ Go back to the research outline.
 - ▷ Click **Sources** from the outline pane.
 - ▷ Position the cursor below the *Sources* heading.
 - ▷ Right click and select *Paste*.

Complete the Research Outline

7. ▷ Find information for each of the headings in the outline.
 - ▷ When done, close the web browser.

You will research *Location* in the next assignment.



Assignment 5 Pinpoint the Location

Where is the environmental issue happening in the world?

Research to identify the country, state, city, or region. For at least two of the locations provide an interesting fact about the problem.




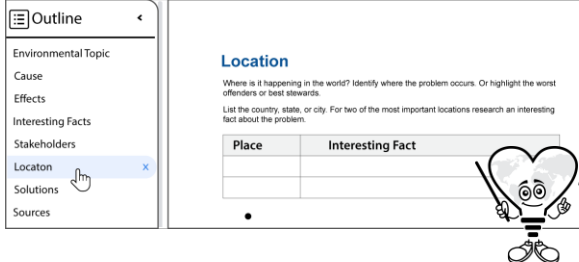
The findings will be used in Session 4 to create an interactive map.

The map can pinpoint:

- worst offenders
- environmental disaster sites
- places that permit or ban activities
- threatened or at-risk regions
- best stewards
- successful environmental projects
- stakeholder locations
- conservation areas

Open the Research Outline

1. ▷ Open the *Research Outline* in Google Docs.
 - ▷ Click *Show document outline* . Or pick it from the View menu.
 - ▷ Click **Location** in the document outline to go to it in the document.



Use the table to store interesting facts about two places.

Research the Location

2. ▷ KEEP THE RESEARCH OUTLINE open!
 - ▷ Open a new tab. Type www.google.com in the address box. Press ENTER.
 - ▷ Use the search term **topic name hotspots**. Or use the suggestions below:

- where is *topic name*
- locations
- around the word
- map
- country
- state
- continent
- geographic area
- statistics
- stats
- facts
- figures

3. ▷ Use your skills to add interesting facts about at least two locations to the research outline.

To insert another row, select the last row. Right click and pick *Insert row below*.



- ▷ Remember to record the **Sources**. When done, close the web browser.