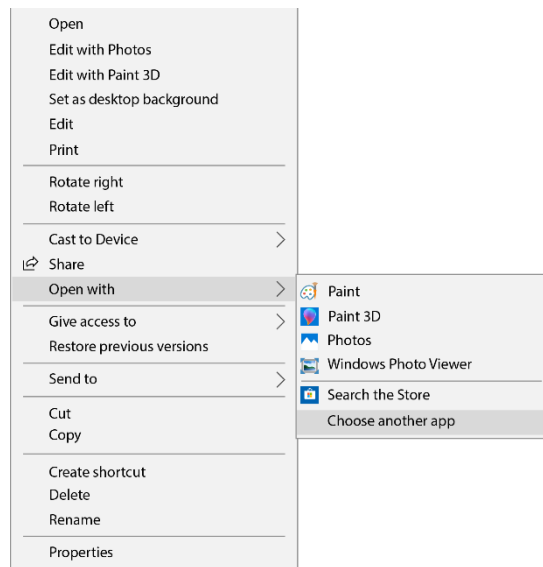


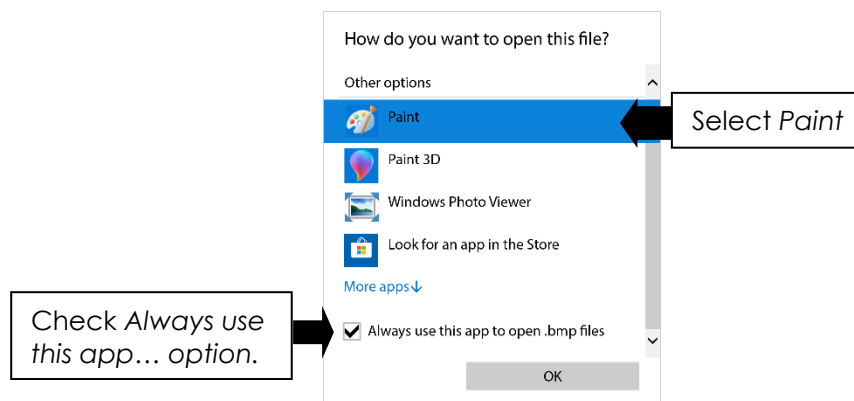
How to Change the Default Image Program to Paint

Some project guides have students open a picture with Microsoft Paint, by selecting the image and pressing the ENTER key or by double clicking on the file. However, this only works if the default program that opens bitmapped (bmp) images is Microsoft Paint. To find out the default program, double click on a bitmapped image. With what program does it open? If it is not Microsoft Paint, then follow the instructions below to change the default program:

1. Right click on the image icon.
2. Select *Open with* from the menu.



3. Click *Choose another app*.
4. In the *How do you want to open this file?* box, select *Paint* from the list.
5. Place a checkmark in the box marked *Always use this app to open .bmp files*.
6. Click *OK*.



7. The picture opens in *Paint*.