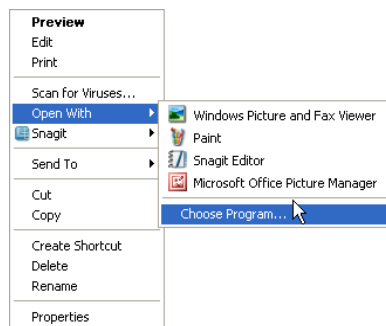


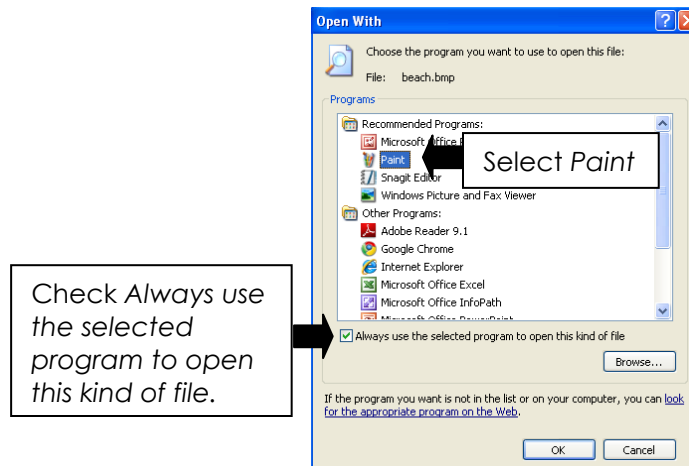
How to Change the Default Image Program Windows XP

Some project guides have students open a picture with Microsoft Paint, by selecting the image and pressing the ENTER key or by double clicking on the file. However, this only works if the default program that opens bitmapped (bmp) images is Microsoft Paint. To find out the default program, double click on a bitmapped image. With what program does it open? If it is not Microsoft Paint, then follow the instructions below to change the default program:

1. Click **once** on a bitmapped picture.
2. Hold down the SHIFT key.
3. Right click on the bitmapped image.
4. Select *Open With* from the menu.



5. From the menu, click *Choose Program...*
6. In *Recommended Programs*, select *Paint*.
7. Place a checkmark in the box marked *Always use the selected program to open this kind of file*.
8. Click OK.



9. The picture opens in *Paint*.